



***Presenter: Robert Lucius, Ph.D.
Executive Director
CREW Land & Water Trust***

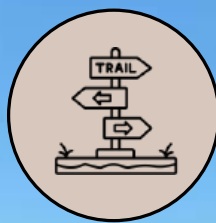


Mission:

The CREW Land & Water Trust was founded in 1989 as a private, non-profit conservation organization dedicated to the preservation and stewardship of the water resources and natural communities in and around the Corkscrew Regional Ecosystem Watershed (CREW).



Preserve



Experience



Understand



Sustain



CREW
Land & Water Trust

The Corkscrew Regional Ecosystem Watershed (CREW) is a 70,000+ acre (110 square miles) watershed that includes parts of Collier and Lee counties

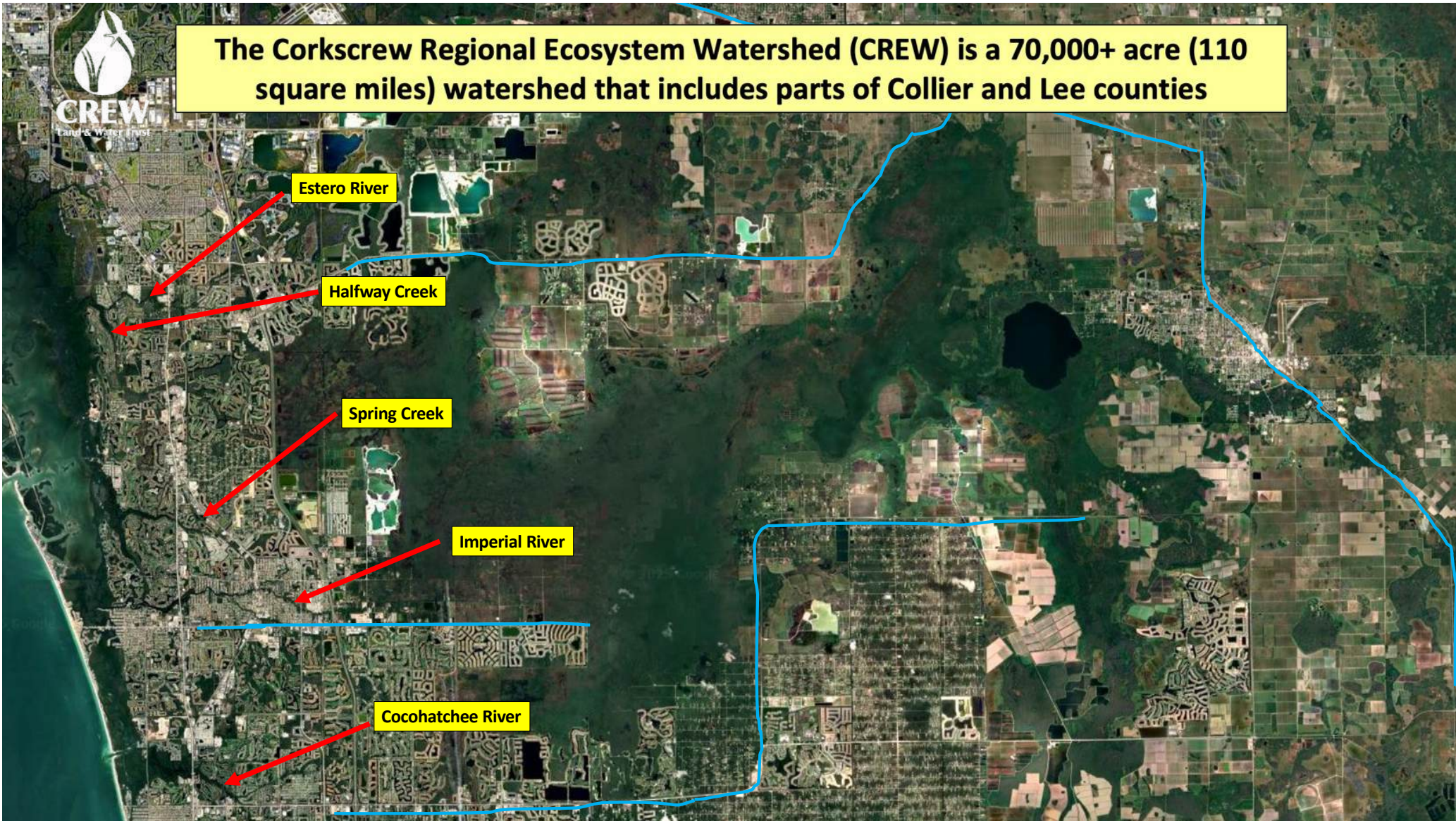
Estero River

Halfway Creek

Spring Creek

Imperial River

Cocohatchee River





The CREW Project



Group wants to buy sensitive land

By SHELTON ZOLDAN
News-Press Staff Writer

Environmentalists, farmers, government officials and developers have banded together to raise between \$30 million and \$60 million to buy environmentally sensitive land in Lee and Collier counties.

Corkscrew Regional Ecosystem Water Trust — CREW — wants to buy 40,000 acres, including the Flint Pen Strand in southeastern Lee County and the Bird Rookery Swamp in northern Collier County.

The trust was formed last month, and met Thursday in Fort Myers for the first time to discuss its plans. About 12 of the 36 trustees attended.

CREW trustees only touched on the money issue Thursday. Most of the two-hour meeting was spent explaining the goals and objectives of the trust, how land trusts work and why buying the land is so important.

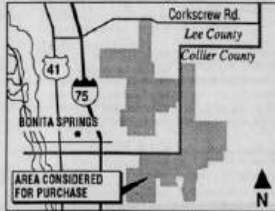
Purchasing the land should take about five years, said Bill Malone, director of land management for the South Florida Water Management District. The trust won't have the power to buy the land, only to negotiate deals for the South Florida Water Management District and the counties, he said.

The water management district has agreed to contribute \$10 million from its Save Our Rivers program for the project. Lee County has included \$5 million in its budget to purchase part of the Flint Pen Strand.

Joel Kuperberg, who helped form the trust, said one of the trust's goals will be to seek gifts and bargain prices from land owners or make land exchanges.

CREW's objective is that the first land acquisition should be the best possible, as a precedent for all others.

Malone hopes CREW will do more than raise money.



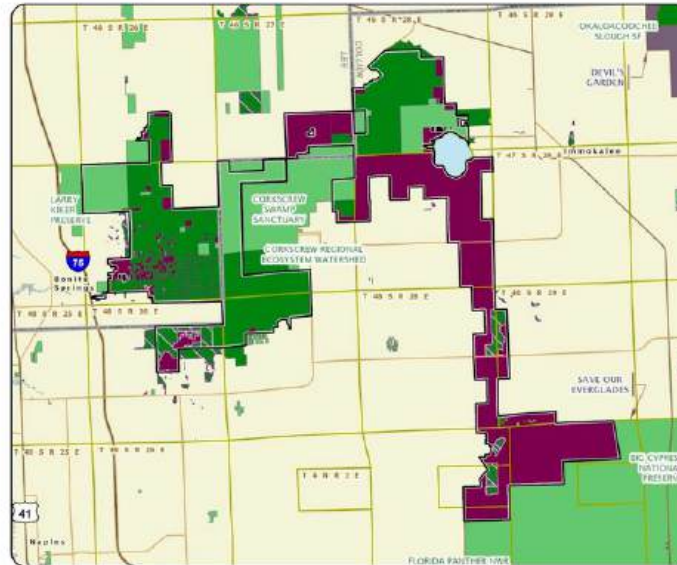
"I hope it will be an active participant in finding a balance between the different uses (for the land)," he said.

The 40,000 acres CREW wants to obtain surrounds Corkscrew Swamp Sanctuary. It's a significant watershed and buffer to the sanctuary, according to a report done by the water management district.

The land could be used as a water source for both counties in the future and for recreation. The area is already being used or being considered for use by water companies, the report said.

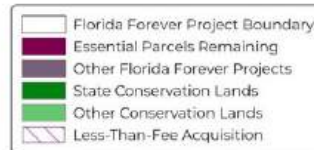
The 40,000 acres will have more of an impact than simply supplying water to both counties. It is the headwaters of a flowage way which extends 48 miles south, west the newly created Florida Panther. The area also includes the 10,000-acre Fakahatchee State Wilderness Preserve, the 10,000-acre Florida Bay National Aquatic Preserve, the estuaries of Florida Bay and the Gulf of Mexico, said Fred Davis, director of the Save Our Rivers program.

CREW is scheduled to meet monthly, except for next month. It intends to meet Dec. 7 in Naples and then meet on the fourth Thursday of every month beginning in 1990. The meetings will rotate between Naples and Fort Myers.



CORKSCREW REGIONAL ECOSYSTEM WATERSHED

COLLIER AND LEE COUNTIES



Group maps strategy to buy swamp lands

By KATHY BECKER
News-Press Staff Writer

Regional and county officials, both private and government, are trying to buy some swamp lands in Lee and Collier counties.

A group met Thursday and formed the Corkscrew Regional Ecosystem Water Trust, or CREW Trust, to chart a strategy for purchasing and managing about 50,000 acres of land around the National Audubon Society's Corkscrew Swamp Sanctuary in northern Collier County.

The group was formed with the help of the South Florida Water Management District, which wants to preserve the land because of its importance in protecting water resources in Southwest Florida.

"It's a mission-oriented group," said Joel Kuperberg, a consultant for the district. "We're trying to identify a natural and water resource area."

People concerned about the natural importance of the area — with virgin bald cypress and wetlands — were also represented in the group, which includes 18 trustees representing both counties, the water management district, conservation groups, the state and private interests.

The land under consideration for purchase includes:

- 12,640 acres in the Flint Pen Strand east of Bonita Springs in Lee County.

- 10,441 acres of the Bird Rookery Swamp south of the Corkscrew Swamp Sanctuary in Collier County.

Marsh/Lake Trafford wetland northeast of the sanctuary.

- 8,742 acres in the North Fakahatchee Corridor southeast of the sanctuary.

The estimated \$37 million in purchases are to be divided equally among local government, the water management district and private funding.

Some funding has already been targeted for the project. The water management district has earmarked \$10 million to \$15 million for the project through its Save Our River program. Lee County recently approved a two-tenths-mill tax increase, which is expected to bring \$10 million for the project in three years.

Initial funding and support should come from the water district.

Ed Carlson, who manages the Corkscrew Sanctuary, said the land is important to the whole area of the Big Cypress Swamp, and to other waterways such as the Imperial River and the Estero Bay which receive runoff from the swamp.

"It includes the area headwater to the water systems in Southwest Florida," he said. "It affects other natural areas. It's a living water management structure."

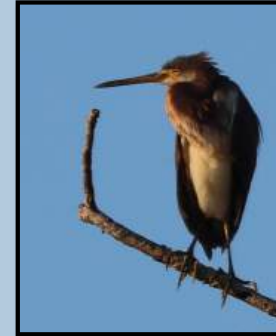
The land is important because its ability to recharge and replenish the area's aquifers. It also has the possibility of providing drinking water to the region in the future.

The trustees plan to meet once a month once a strategy for acquisition, funding and management of the land is drawn up by the water management district.

October 27, 1989

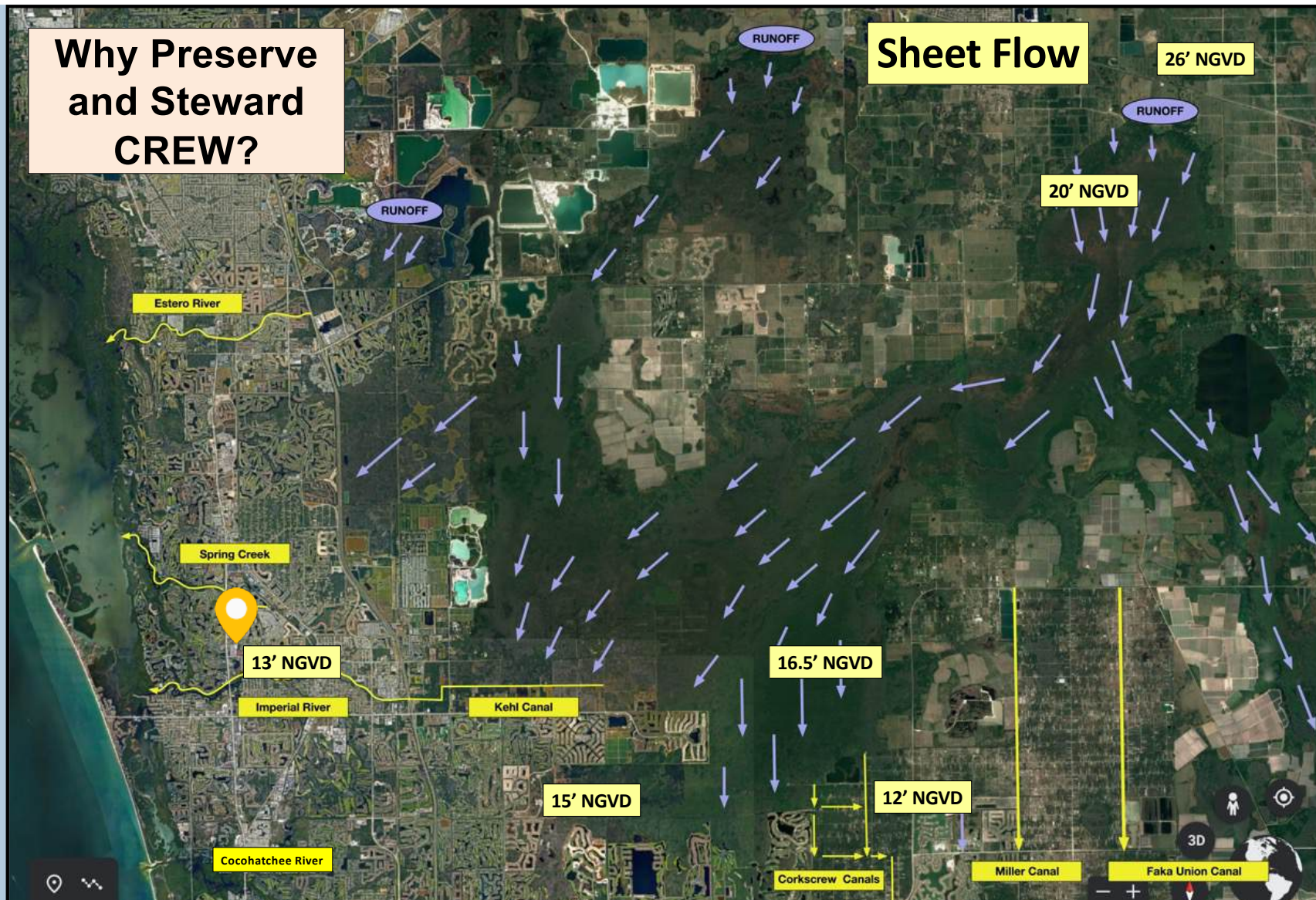
September 29, 1989

Why Preserve and Steward CREW?



**Why Preserve
and Steward
CREW?**

Sheet Flow



Why Preserve and Steward CREW?

Flood Risk Mitigation





First-place Buccaneers win again
Tampa tops Minnesota; New Orleans upsets Miami. Sports / 1C

Neighbors keep in touch
Newsletters, chat lines hot. Lifestyles / 1D

SOUTH LEE BONITA EDITION COLLIER

NEWS-PRESS

MONDAY, OCTOBER 18, 1995 FORT MYERS, FLORIDA 33 cents / 30 cents in Collier County

Blacks unite for rally in D.C.

News Press staff and city reports

WASHINGTON — As thousands of African-Americans gathered in the nation's capital for today's Million Man March, organizers hoped the event would be a symbol of unity and a call to action for the black community.

Organizers of the rally, which was held at the Lincoln Memorial, said they hoped it would be a symbol of unity and a call to action for the black community.

The rally was held at the Lincoln Memorial in Washington, D.C. It was the largest gathering of African-Americans in the nation's capital since the 1963 March on Washington.

The rally was held at the Lincoln Memorial in Washington, D.C. It was the largest gathering of African-Americans in the nation's capital since the 1963 March on Washington.

Flooding is worse than ever

Water swamps new areas, forces more evacuations

By ANDREA STETSON
News Press staff writer

Flooding from this weekend's heavy rain in Bonita Springs and surrounding areas is worse than ever, with water rising in some areas to 10 feet above ground level.

The flooding is the worst in the area since the 1963 March on Washington. It is the worst in the area since the 1963 March on Washington.

The flooding is the worst in the area since the 1963 March on Washington. It is the worst in the area since the 1963 March on Washington.

Sheetflow means it's not over for Bonita

North Lee also at risk

By KEVIN LOLLAR
News Press staff writer

For two days, Bonita Springs has been hit by a wet double whammy. Heavy rains spawned by Tropical Storm Jerry have piled up in north Lee County, and it's raining into Bonita from two directions in the form of sheetflow — the slow, steady movement of water across land.

Everything from the airport is draining south and ... water from Corkscrew Swamp and Plant Pen Strand is draining west," said Karl Harclerode, spokesman for the South Florida Water Management District.

"You have this large watershed and all that drainage going into a very restricted area — the Koff Canal and then the Imperial River," he said.

The canal, which forms the headwaters of the Imperial, and the river can't hold such huge volumes of water, and the ground already is so saturated it can't soak up any more water. So the water spreads slowly out over the land, headed for the Gulf — and Bonita Springs.

"And then you have development," Harclerode said.

Some Bonita areas, which received as much as 18 inches of rain the past two days, were developed before present water management regulations were in place, so roads were built without regard to how they would affect the natural movement of water during heavy rains.

Those roads act as dams, so water backs up behind them and causes flooding.

Adding insult to injury, high tide has pushed water back up the already swollen Imperial River, increasing the flooding as far upstream as U.S. 41.

Areas affected by sheetflow can continue to suffer flooding even after the rain stops. Emergency officials in Bonita Springs say the full effect of sheetflow into their community may not be felt for another two days or longer.

Bonita is not the only place in Lee County plagued by backed-up sheetflow.

Water running down from Charlotte County's C.M. Webb Wildlife Management Area and Telegraph Swamp flooded portions of North Fort Myers north of Bayshore Road during the storm on June 12.

The area never fully dried out, and this week's rains are making a bad situation worse.

"It's extremely wet up here, the whole area is wet," North Fort Myers resident Dan Shaffer said. "If we get four or five more inches, it'll be so bad on it was in the worst part of June. And it looks like we'll get it."

North Fort Myers was hit with about 5.5 inches of rain on a Tuesday night, and it's raining again.

Under natural conditions, some of the water falling on the wildlife refuge and the swamp soaked into the ground, and the rest made its way to the Caloosahatchee in creeks or as sheet flow.

But old roads with insufficient culvert systems virtually have turned Popok and Shallop creeks, two main tributaries of the Caloosahatchee, into sheetflow.

So, as in Bonita, water backs up behind the roads to flood property and roads.

Because many of the roads in that area are private, they are the responsibility of the property owners who live along them rather than the county.

For years, Suncoast Estates in North Fort Myers faced the same problem, but in 1987, Suncoast residents voted to tax themselves to build a storm water management system. Today the Forest Creek basin in Suncoast is a model of storm water management.

The Committee to Exhume Drainage and Roads in Northeast Lee County, founded by Shaffer, met Tuesday to consider how they might alleviate their problem.

"We've discussed becoming a separate taxing district, but we all ready pay a lot of taxes out here, and we feel we're not getting anything for our tax dollars," Shaffer said. "It would be hard for us to tax ourselves when we don't feel we're getting anything for what we're already paying."



Why Preserve and Steward CREW?

Stormwater Control

One acre foot of water = 325,851 gallons.



CREW Marsh Unit



CREW Flint Pen Strand

Why Preserve and Steward CREW?

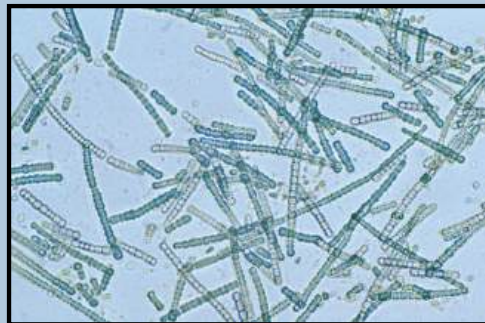
Water Quality Regulation



> \$32 Billion Estimated Loss

Table ES-1: Summary of Annual Economic Losses from HAB Event

Type of Economic Asset	Charlotte	Lee	Collier	Study Area
Fishing (Commercial and Recreational)	\$24 million	\$194 million	\$243 million	\$460 million
Coastal Economy – Jobs	4,353	24,808	13,933	43,094
Coastal Economy - Output	\$466 million	\$3.0 billion	\$1.7 billion	\$5.2 billion
Property Values	\$1,715	\$6,700	\$9,400	\$17.8 billion
Property Tax Revenue	\$3.2 million	21.4 million	35.7 million	\$60.3 million
Value of Outdoor Recreation (Quality of Life)	\$518.6 million	\$5.3 billion	\$2.3 billion	\$8.1 billion



Impacts of Water Quality on the Southwest Florida Economy

FINAL REPORT



Prepared for:
 **SCCF** Southwest Coastal Conservation Foundation
 EXPANSION FROM
 BROWARD COUNTY
 CLEAN WATER
 **CONSEANCY** of Southwest Florida
 CONNECTING OUR WATER, ECONOMY AND QUALITY OF LIFE
 **GREE ECONOMICS** Impacts of Water Quality on the Southwest Florida Economy
 Prepared by: Gree Economics LLC
 3316 NW 28th Street
 Hollywood, FL 33021
 Email: info@greeeconomics.com
 Website: greeeconomics.com



Why Preserve and Steward CREW?

Water Quality Regulation



One acre of wetland can filter 7.3 million gallons of water per year.



CREW Marsh Unit

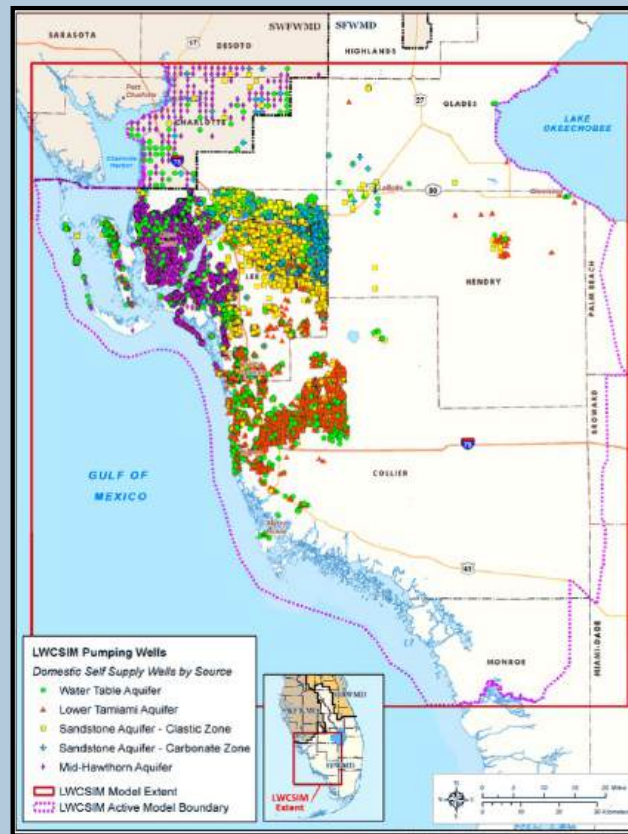
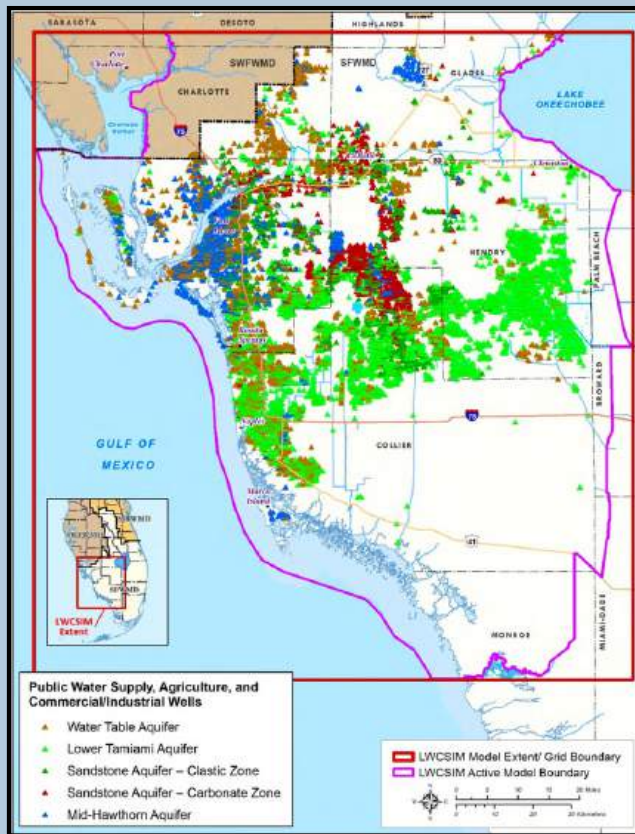


CREW Flint Pen Strand



Why Preserve and Steward CREW?

Groundwater Recharge



SEVERE WATER SHORTAGE

MANDATORY WATERING RESTRICTIONS IN EFFECT

PROTECT OUR WATER SUPPLY

SFWMD.gov/WaterShortage



All Pumping Wells Colored By Aquifer

LWCSIM Wells

AQUIFER

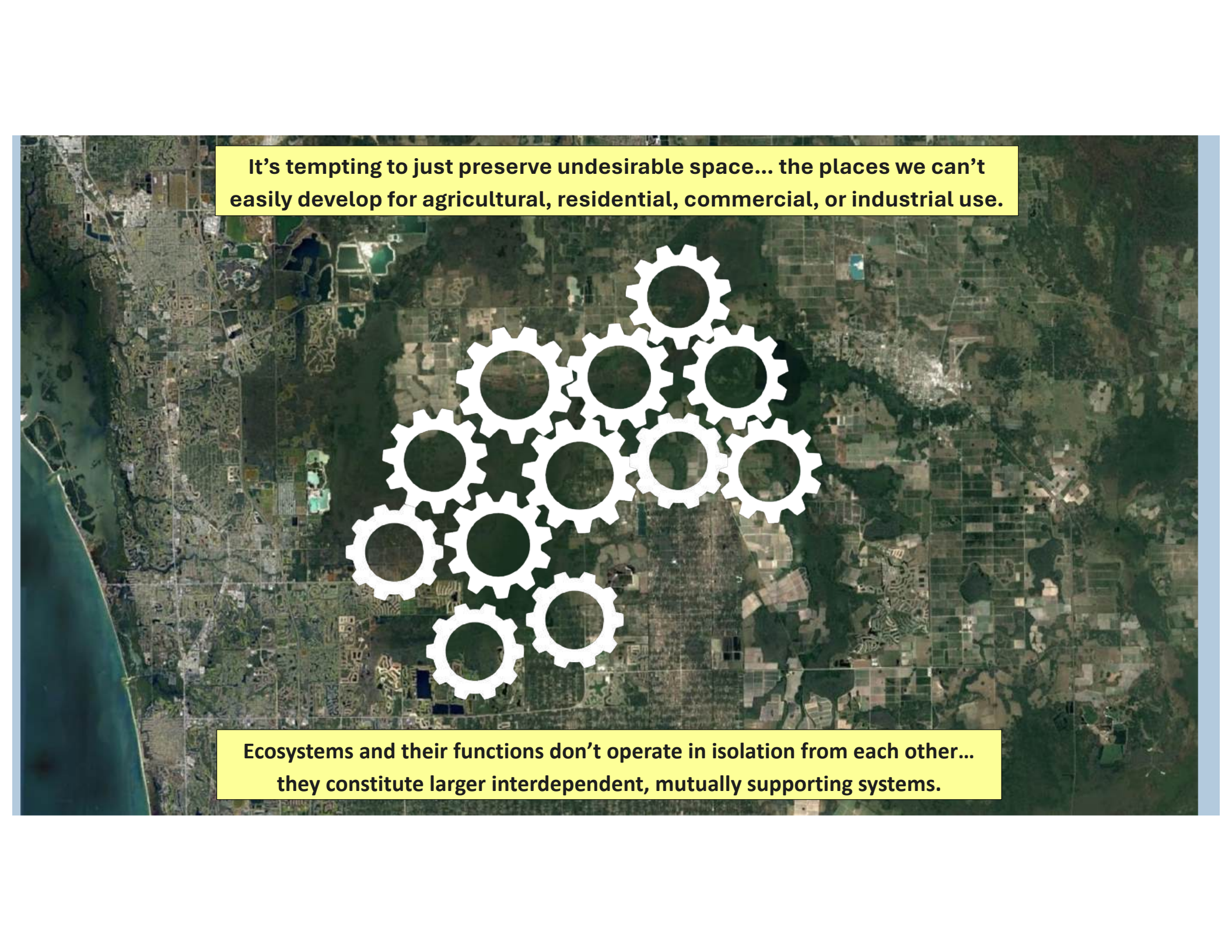
- Water Table
- Lower Tamiame
- Sandstone - Clastic
- Sandstone - Carbonate
- Mid-Hawthorn

LWCSIM Model Extent

LWCSIM Active Model Boundary

Scale: 0 5 10 15 20 Miles

North Arrow

An aerial photograph of a coastal landscape, showing a mix of green fields, brown patches, and a body of water on the left. Overlaid in the center is a cluster of 12 white interlocking gears of various sizes, arranged in a roughly circular pattern. The gears are semi-transparent, allowing the landscape details to be seen through them.

It's tempting to just preserve undesirable space... the places we can't easily develop for agricultural, residential, commercial, or industrial use.

Ecosystems and their functions don't operate in isolation from each other... they constitute larger interdependent, mutually supporting systems.

The 4 Pillars of the CREW Project

Preserve: Land Acquisition & Management



Experience: Compatible Public Use



Understand: Environmental & Watershed Education

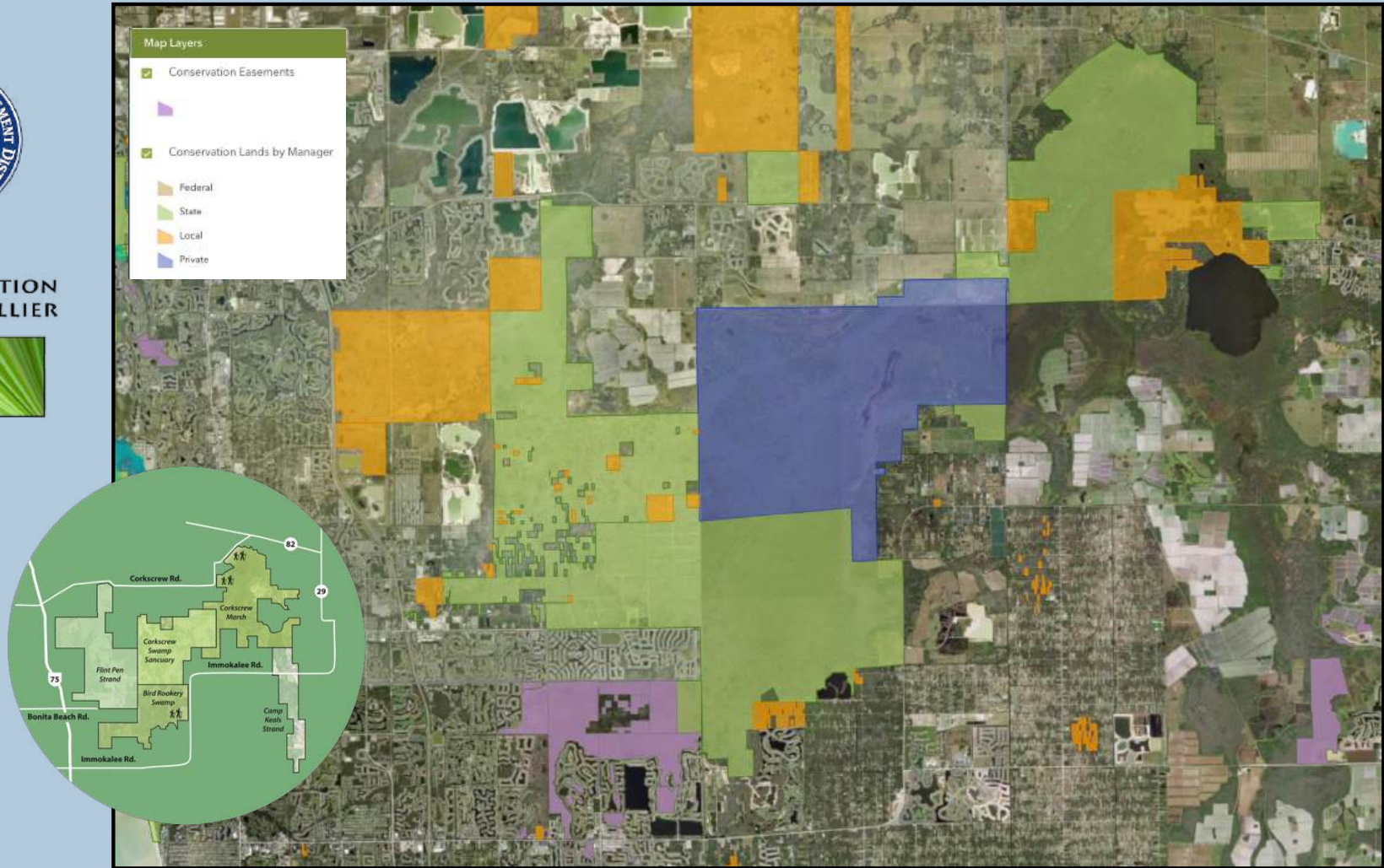


Sustain: Research & Action





Land Acquisition & Management





The CREW Trust Team

- **30 Trustees**
- **Four full-time staff members:**
 - Executive Director
 - Education Coordinator
 - Engagement Coordinator
 - Trail Ops Coordinator
- **3-4 College Interns annually**
- **60+ Volunteers - 5,314 hours in FY25 worth \$165,929**
- **350+ Members**
- **Sponsors for our annual golf tournament and trail sponsorship campaign**





Compatible Public Use

4

Trail Systems

13

Different Trails

43+

Miles of multi-use trails to explore

3

Viewing Platforms

3

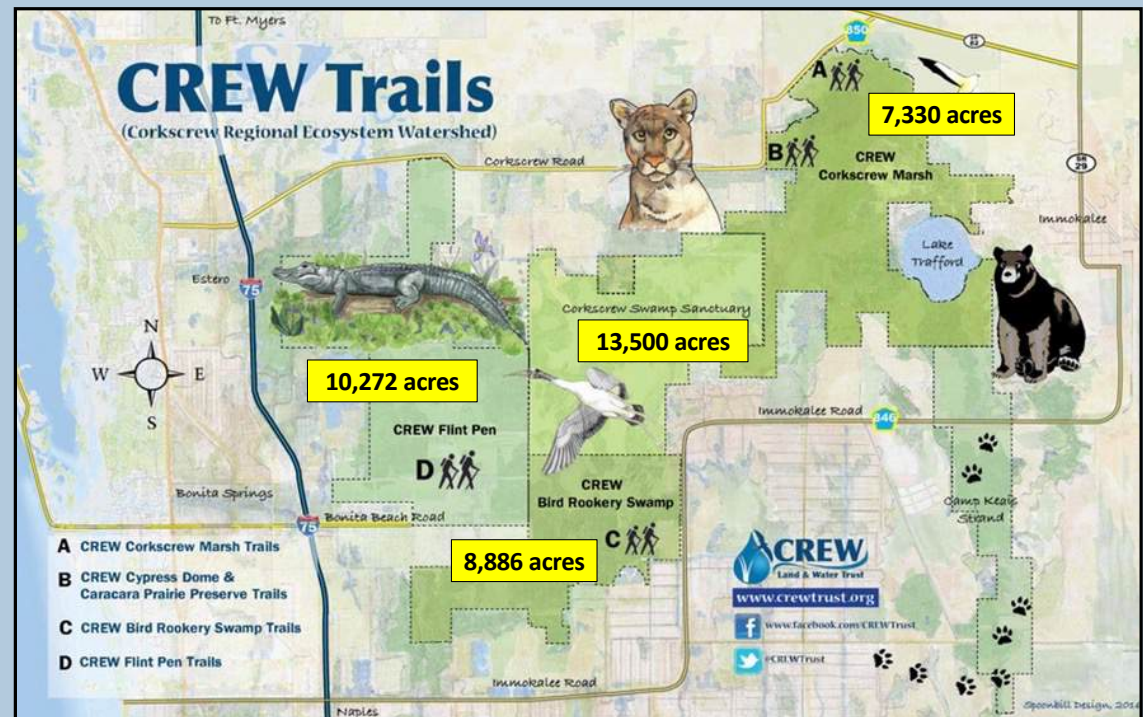
Elevated Boardwalks

3

Primitive Campsites

3

Picnic Pavilions



Environmental & Watershed Education

K-12



Environmental & Watershed Education

Young Adult



Environmental & Watershed Education

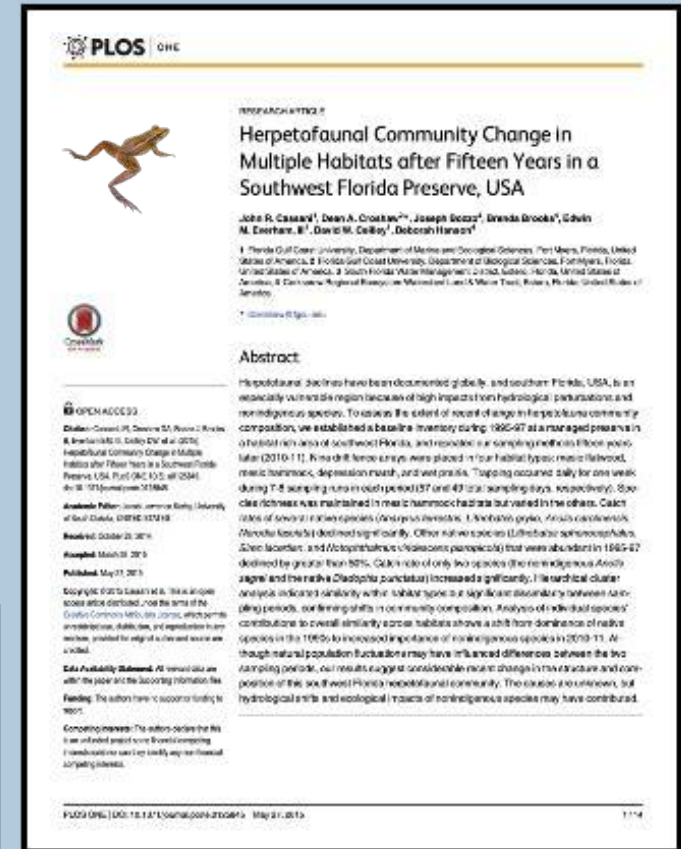
Adult



Research & Action



- Water Gauges
- Butterfly Count
- Frog Watch
- Bug Watch
- Dip Netting
- Bat Monitoring
- Nesting Surveys
- BioBlitz
- Chronolog Photo Monitoring
- Trail Cam monitoring
- Orchid Restoration
- Lake Watch/Pond Watch





Research & Action

CREW Orchid Restoration

- 380 Orchids
- 12 Species
- 4 days of scouting locations
- 3 days of planting
- 24 participants
- 10+ local environmental organizations represented
- 356 volunteer hours





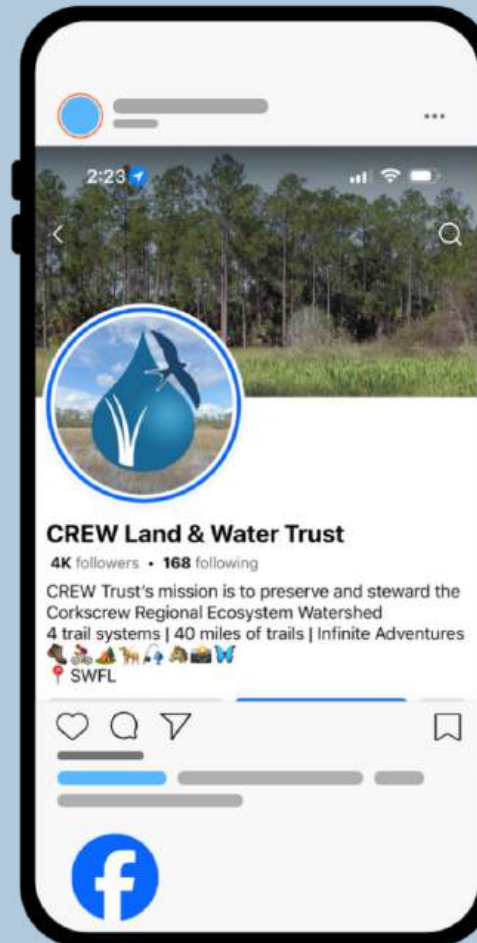
Follow us on Social Media

CREW Land & Water Trust NOVEMBER EVENTS						
SUN	MON	TUE	WED	THU	FRI	SAT
						1
2	3	4	5 Guided Walk: Yellow/Green 9-11:30 AM	6	7 Golf Tournament Tee Off: 12 PM	8 Guided Walk 9-11:30 AM Panthers & Bobcats 9-11 AM
9	10	11	12 Guided Walk: Red 9-11:30 AM	13	14	15
16	17 Guided Birding Walk 8-11 AM	18	19 Guided Walk: Yellow 9-11:30 AM	20 ITL: Parasites 5:30-7 PM	21 MO: Coffee Roll & Stroll 9-11 AM	22 Hunt Season: General Gun →
23	24	25	26	27	28	29
30						

EVENT LOCATIONS:
CREW Bird Rookery Swamp Trail
CREW Cypress Dome Trails
CREW Flint Pen Strand Trails
CREW Marsh Trails
Other - see Eventbrite

SPECIALTY EVENT TYPES:
ITL = In-Town Lecture
MO: Members-Only
TO REGISTER:
Visit crewtrust.eventbrite.com
FOR HUNT INFO:
Visit myfwc.com/recreation/cooperative/crew/

SCAN ME





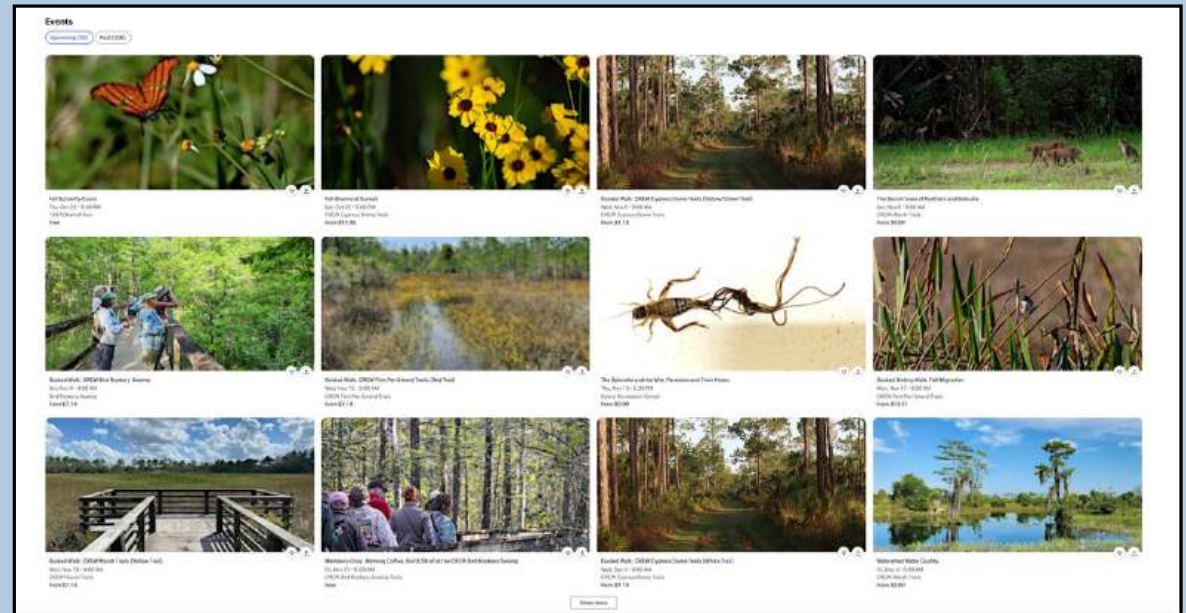
Come visit the CREW Trails





Join a Program

- **Guided trail walks**
- **Monthly guided birding walks**
- **Strolling Science Seminars**
- **Specialty Topic Treks**
- **In-town lectures**
- **Community Science**
- **Strolling Science for Kids**
- **Geocaching**



 crewtrust.eventbrite.com



Become a Member

www.crewtrust.org



Members-Only Programs

Always free,
only for the
CREW!

Oct 10

Members Social
6:00 PM - 8:00 PM
Riptide Brewing Company

Nov 21

Morning Coffee, Roll & Stroll
9:00 AM - 11:00 AM
CREW Bird Rookery Swamp Trail

Dec 12

Night Hike
5:30 PM - 7:30 PM
CREW Marsh Trails

Jan 9

Mindfulness Hike
9:00 AM - 11:00 AM
CREW Marsh Trails

Jan 22

Painting in Nature
4:00 PM - 6:00 PM
CREW Flint Pen Strand Trails

Feb 20

Members Social
6:00 PM - 8:00 PM
Riptide Brewing Company

Mar 25

Bug Watch
7:45 PM - 9:45 PM
CREW Marsh Trails

Apr 24

Morning Coffee, Roll & Stroll
9:00 AM - 11:00 AM
CREW Bird Rookery Swamp Trail



Not a
member?
Join today at
crewtrust.org

To register, visit
crewtrust.eventbrite.org





Become a Volunteer





Become a Sponsor

- **Stanley Hole Golf Tournament**
- **CREW Trails Sponsorship**
- **Summer In-Town Lecture Series**
- **Strolling Science Seminars for adults & Kids**
- **Youth Education Programs**
- **CREW Trust Internship Program**





Questions?

"A society grows great when old men plant trees whose shade they know they shall never sit in."



Robert Lucius, Ph.D.
Executive Director

Phone: 239-657-2253
Cell: 831-236-5518
Email: RLucius@CREWTrust.org

23998 Corkscrew Road
Estero, FL 33928

